

Harnham Harvest Table

Every Saturday morning from 16th July to 24th September local residents are invited to bring their surplus fresh fruit and vegetables from gardens and allotments to share with their neighbours. All welcome.

Harnham Community Network also offers Coffee and Chat every Saturday morning, same time and place.

Harnham Parish Hall field,
Lower Street,
Harnham
SP2 8EY

except 6th August when at Rowbarrow Green, near the NISA shop in East Harnham.
10am - 12 noon

for information:
www.harnhamcommunity.org

07962 213494



Any food retailers with surplus food nearing its sell by date are invited to contact one of the local groups listed here that help people in need.

This leaflet has been compiled by Safer and Supportive Salisbury. Anyone providing support to local people in need is welcome to copy and pass on.

safersalisbury.org.uk



Leaflet generously supported by Alex and Maria of Pizza Venti,
Fisherton Street Salisbury

Help with food in Salisbury

June 2022



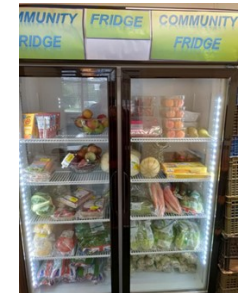
Struggling to put food on the table?

Here are some of the places you can get help:

Salisbury Foodbank



Community Fridge



Salisbury Pantry



Harnham Harvest Sharing Table



In need of food right now?



Get in touch with us by calling or e-mailing our foodbank so we can talk through your situation and put you in touch with one of our local referral agencies.

Citizens Advice, housing support officers, children's centres, health visitors, social services and some local charities all work with Salisbury Foodbank to provide crisis help.

Talk to a **Referral Agency** or if you are in financial crisis and live in Wiltshire, talk confidentially with a trained [Wiltshire Citizens Advice](#) adviser on Freephone **0800 144 8848**.

If they think you need the help of a foodbank they will issue you with a foodbank voucher.

Bring the Voucher to your nearest Foodbank When you arrive, we will exchange your foodbank voucher for a [parcel](#) of three days of emergency food. Please call ahead if you have any dietary needs. If you are isolating call 01722 580173 to arrange a home delivery. (subject to availability)

Our Local foodbank Centres are:

St Paul's Foodbank Centre,
St Pauls Church,
Fisherton Hall @ St Pauls Church
Open Mon, Wed, Fri
11am-2pm
Phone 01722 580173

Downton Baptist Church Foodbank Centre,
South Lane, Downton SP5 3NA
Open Thurs 9am-11am
Phone 01725 512971
E-mail
foodbank@downtonbaptist.org

Amesbury Foodbank Centre,
Community & Visitor Centre
9 Flower Lane,
Amesbury, SP4 7JE
Open Tues 1pm-3pm
Thurs 1pm-3pm
Phone 01722 580173



Need help to make the money go further?



Your Salisbury Pantry is a friendly shop run by the city council communities team at 59 Catherine Street to help people struggling to balance demands on their household income. You can shop for food at a really low cost.

Membership & Shopping
Members can shop once a week for £5. Membership is open to any Salisbury City Parish resident in receipt of benefits, on a low wage or struggling to buy food or pay bills.

This link takes you to the sign up page for membership:

<https://www.yourlocalpantry.co.uk/pantry-listings/salisbury-pantry/>

Each shop has an average value of £20 - £25 each week.

- tinned and jarred goods, rice, pasta
- fresh fruit and vegetables,
- bread
- some fridge & freezer products
- A small range of toiletries and baby items.

Social Supermarkets - not just about food!

It is also a place where people can ask for advice and be signposted to other sources of support. Our aim is that Your Salisbury Pantry is a space where members can build connections and sense of belonging in the community.

Opening Hours
Tuesdays - 10am to 3pm

Want to make your money go further and help prevent food waste?

Salisbury Community Fridge
is at **St Michael's Community Centre, St Michael's Road, Salisbury SP2 9LE**

Phone 01722 328031

Our aim is to help ensure nobody goes hungry. We do this by working with local retailers and individuals who donate food that is near its best before date or that is surplus to their need.

Absolutely anyone is welcome to take food from the fridge and/or fresh fruit and vegetables completely free of charge.

Open every Monday to Friday 9.30am to 2:30pm.